

THE INFORMER



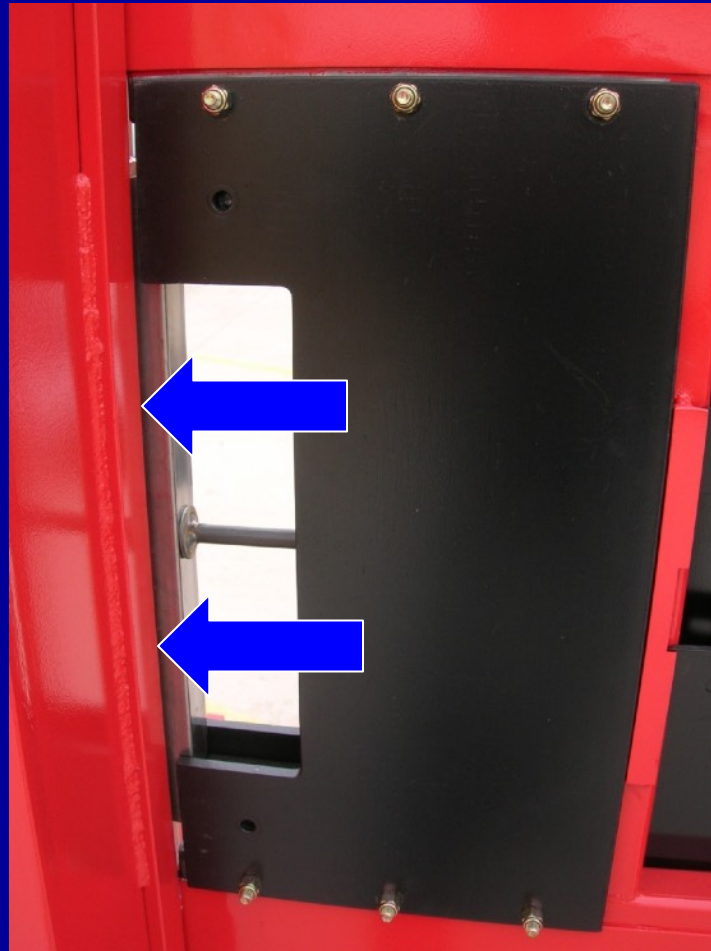
All Firefighting and Emergency response activities are inherently dangerous and require the use of extreme caution at all times. Any person engaging in Forcible Entry activities or training assumes the risk of doing so and should use caution to protect against personal injury to himself or to others at all times.

Wear Appropriate PPE,
Including Ear and Eye
Protection

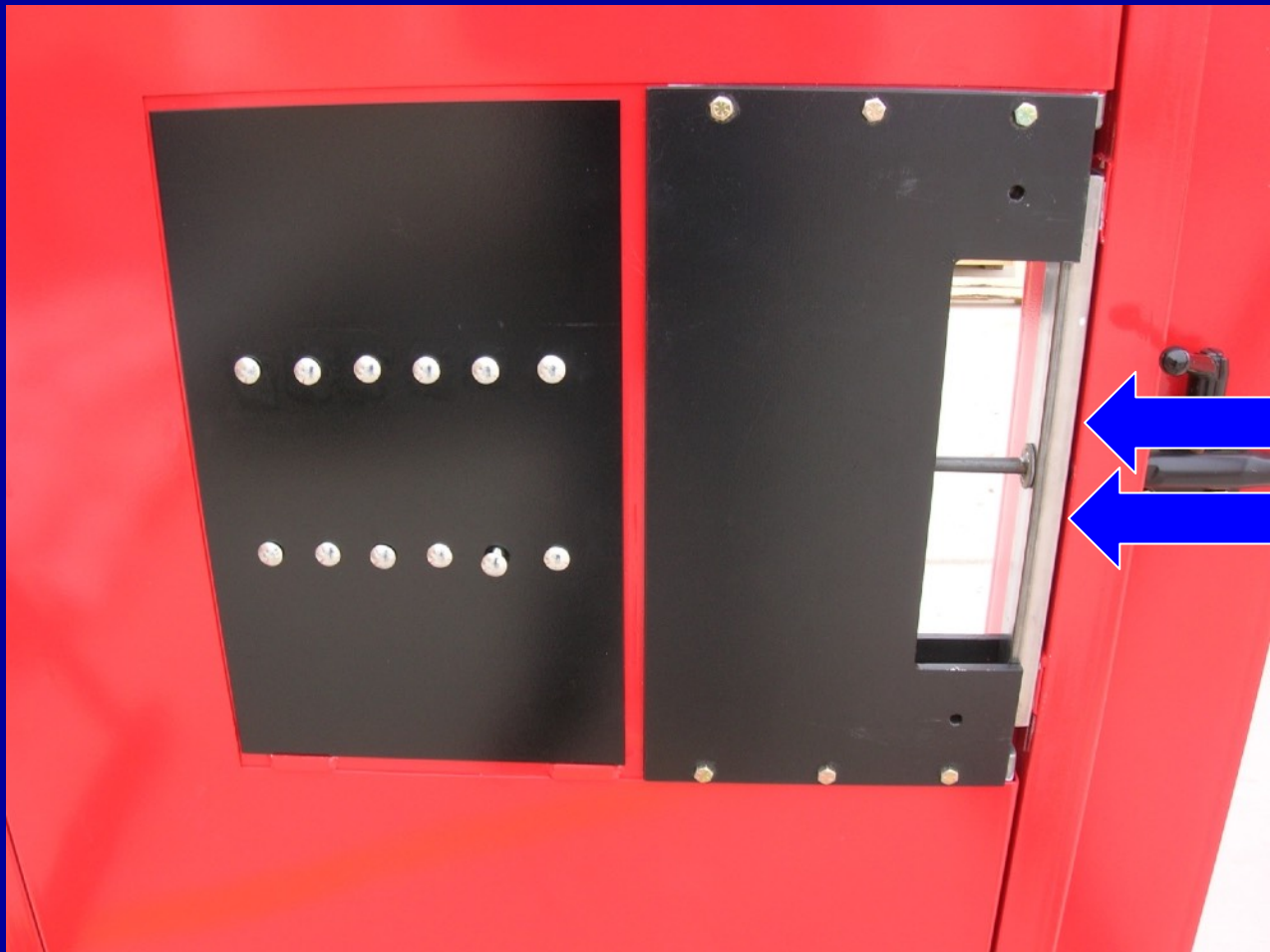
6 Evolutions

- Forcing Inward Swinging Door
- Forcing Outward Swinging Door
- Cutting Commercial Door Hinge
- Cutting Security Drop Bar Bolt
- Cutting Door Latch
- Cutting/Breaking Padlock

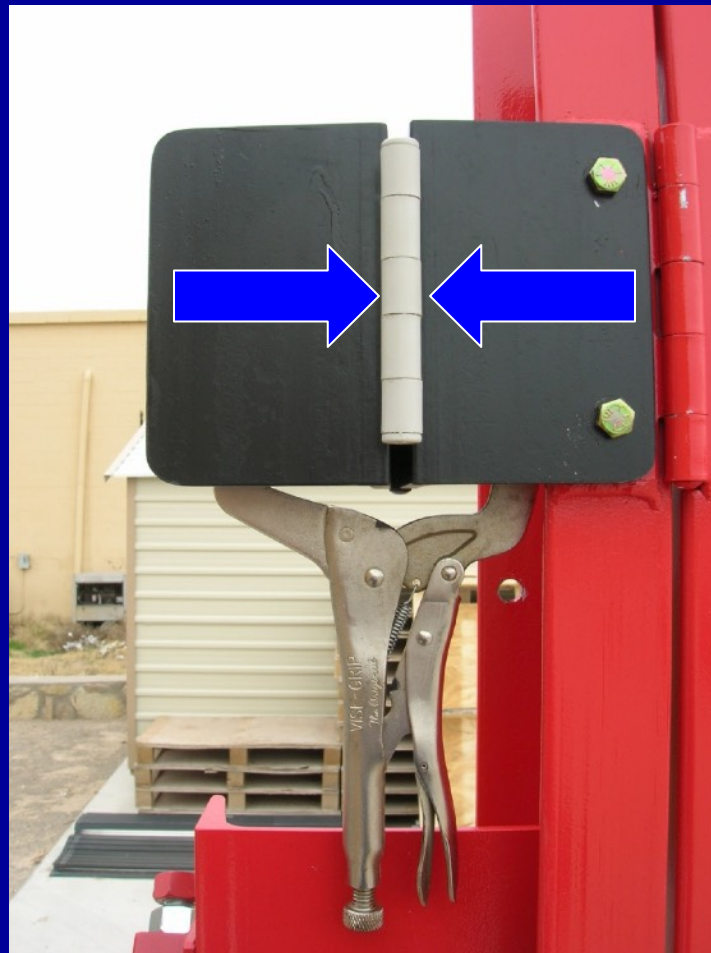
Forcing Inward Swinging Door



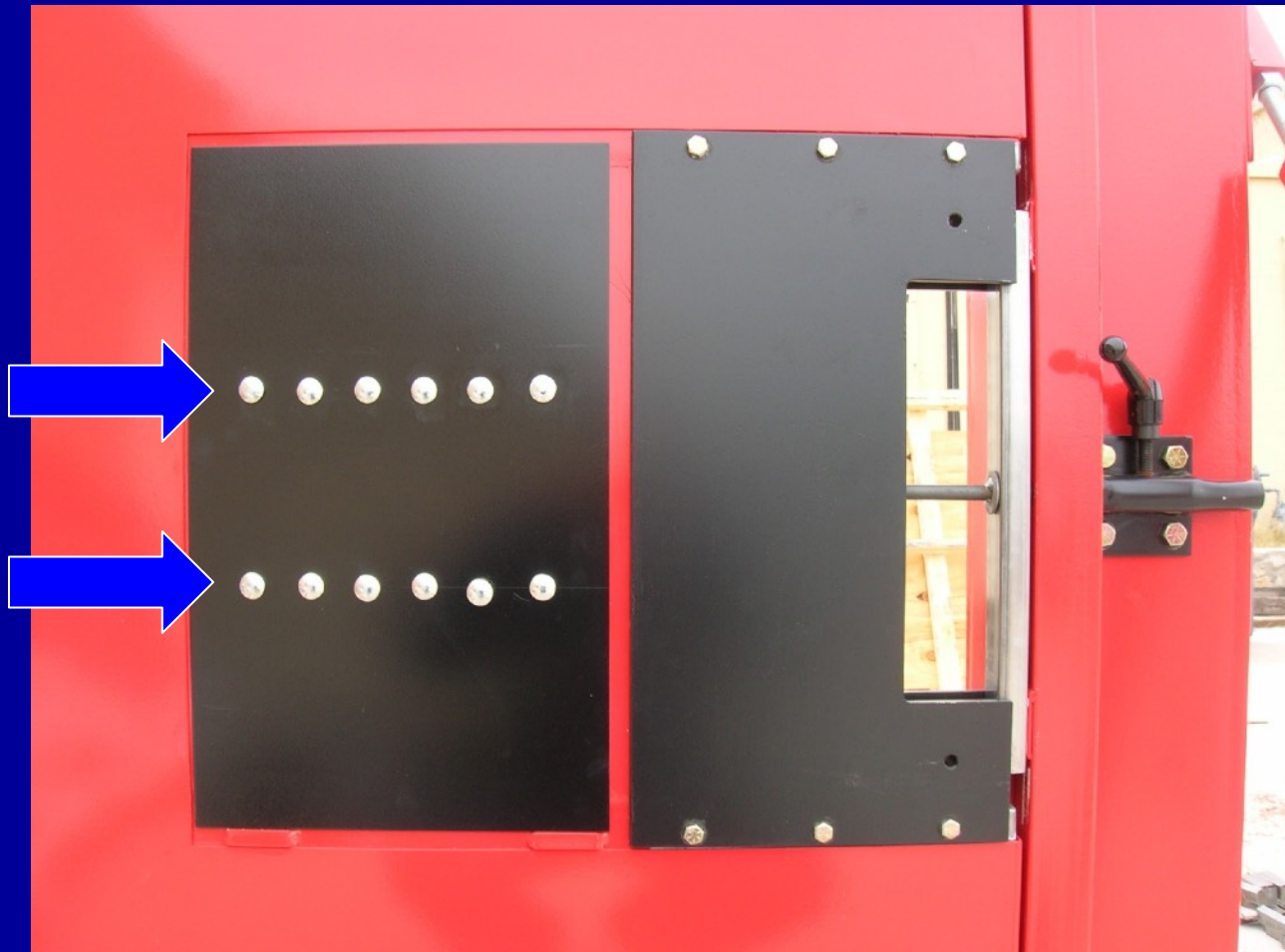
Forcing Outward Swinging Door



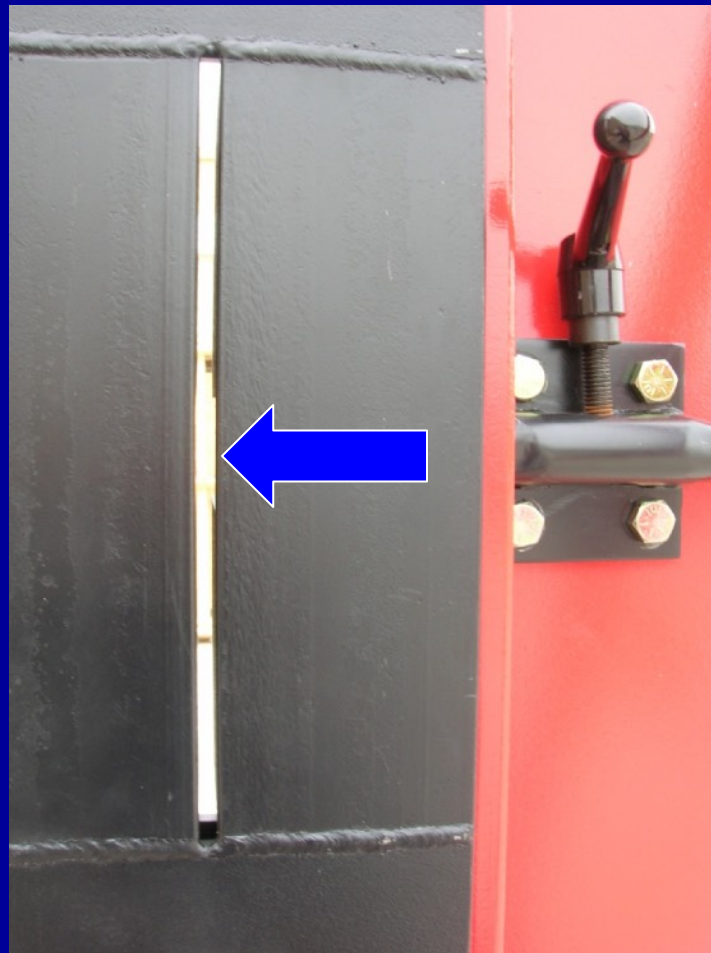
Cutting Commercial Door Hinge



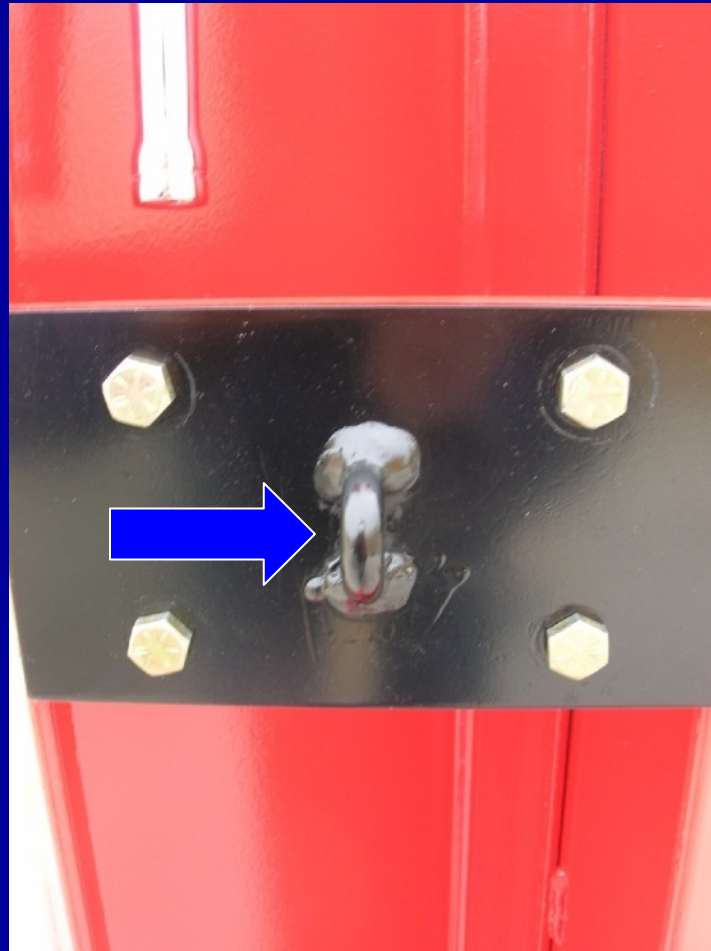
Cutting Security Drop Bar Bolt



Cutting Door Latch



Cutting/Breaking Padlock



Forcing Inward Swinging Door



Insert



- Inserts are reusable

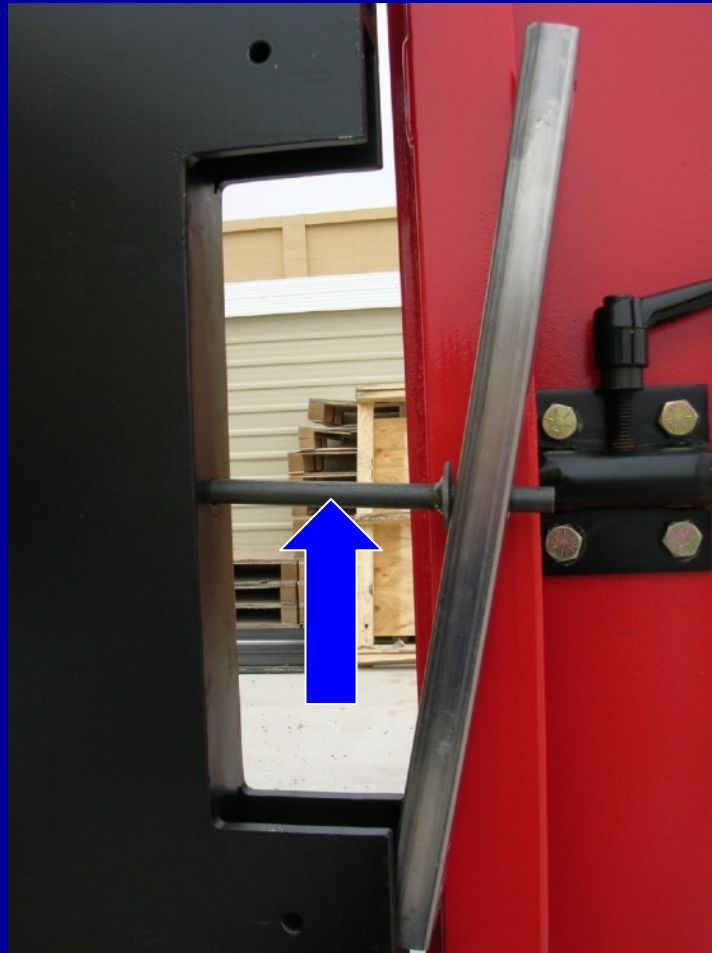
Pin



Spring



Hold pin here when shutting door to avoid pinching hand



Seat Insert In Place ,Pull Pin Back,
Close Door, Release Pin



Insert And Pin In Place



Type of Halligan has a great effect on
the training evolution

Various Forks



Various Adz



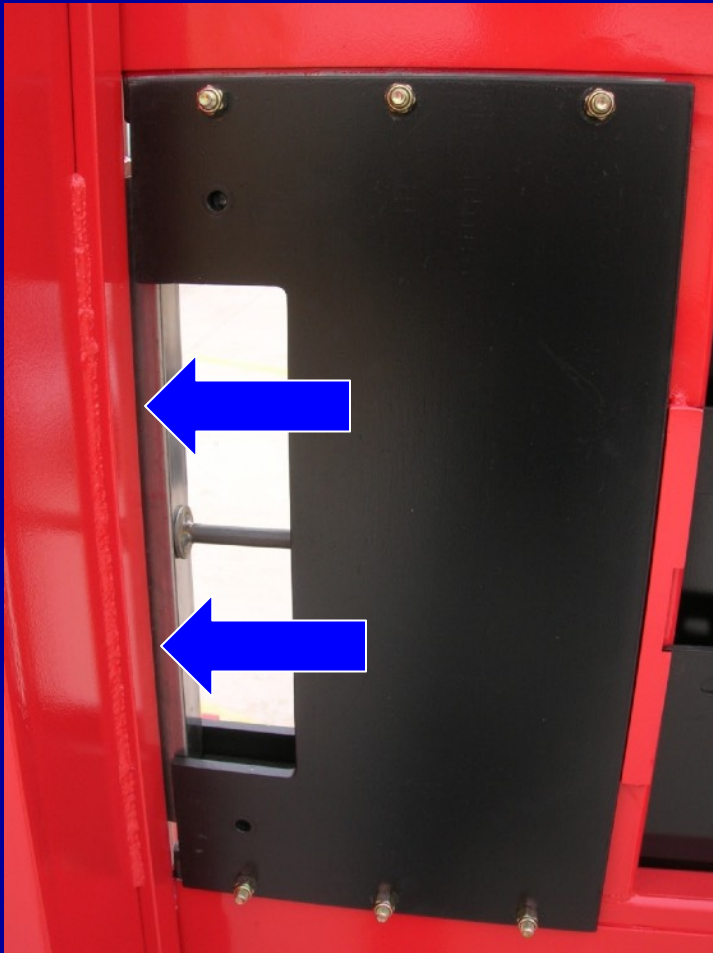
Striking Tool weight has a great effect on the evolution

- 6 LB AXE
- 8 LB AXE
- Sledgehammer

DO NOT USE ON TRAINING DOOR



Forcing Inward Swinging Door



- Have Students force door midway between pin and end of insert. Above or below pin.

Inward Swinging



- Trainee watches the tip of the tool
- Hand Position closest to the striking tool is away from the end of the tool

Inward Swinging



- Works the tip of the tools around the edge of the Insert, always holding inward pressure

Inward Swinging



- Watches the tip of the tool to ensure it is not being driven into the door jamb

Inward Swinging

- Does not give the striker a moving target
- Calls for the striker to strike when needed



Inward Swinging



- Striker swings the striking tool to achieve the largest target area possible on the Halligan minimizing danger to the Trainee holding the Halligan

Inward Swinging



- Drive the tips of the Halligan 1 inch past the jamb so the Halligan does not pop out when it is pushed toward the door



- Once the tips of the halligan are 1 inch past the jamb push the tool toward the door while maintaining your balance

Inward Swinging (2)



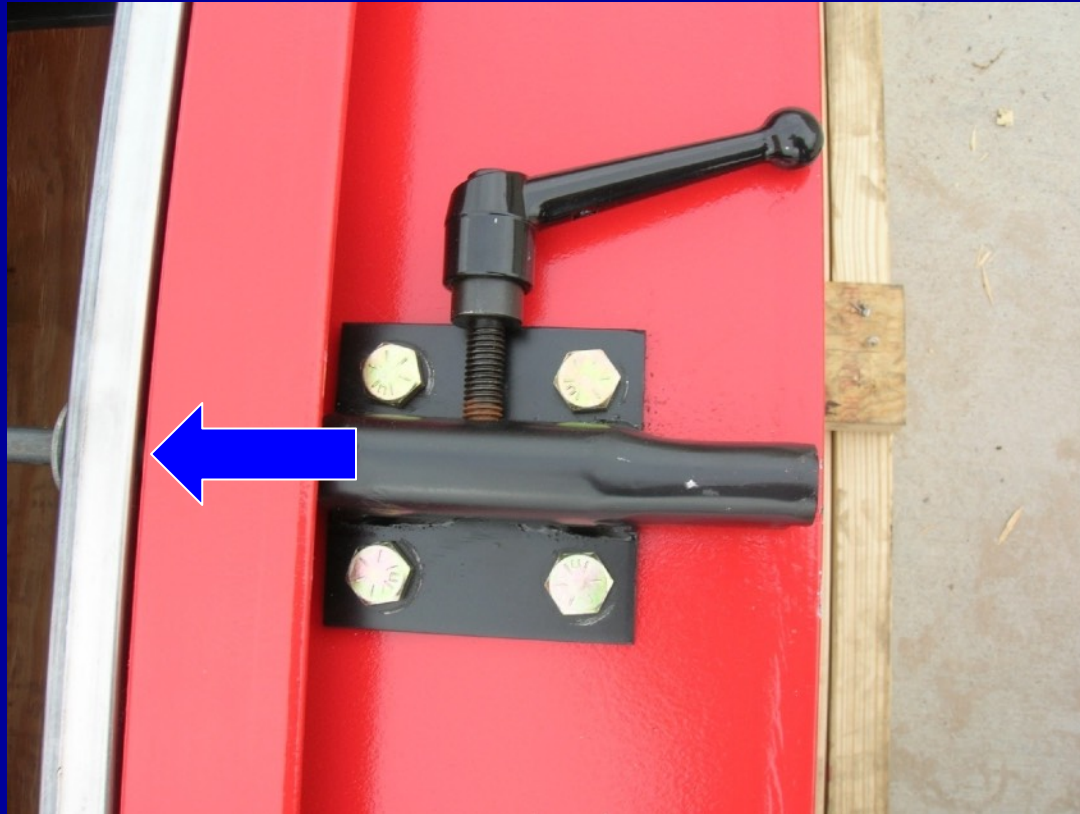
Inward Swinging (2)



Inward Swinging (2)



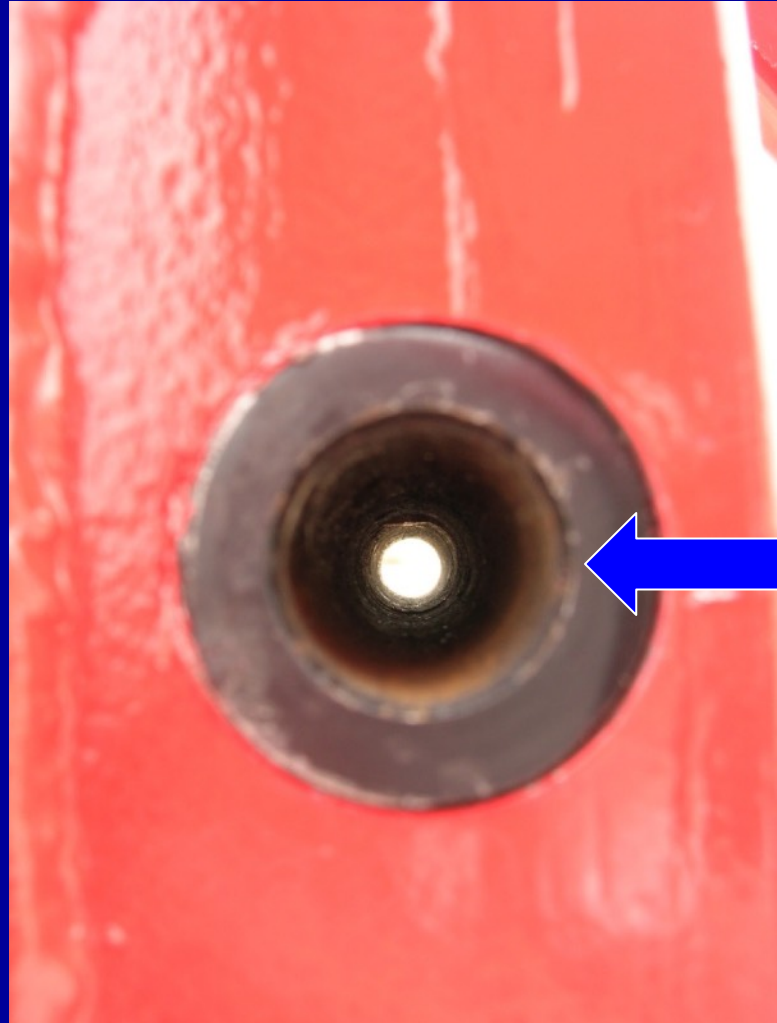
Pin Inserted Into Door Jamb



Door Jamb Hole



Door Jamb Hole Wear Area



Door Jamb Hole Wear Area

- If the Door Jamb Hole wear area is worn to the point it is effecting your Training, it can be unbolted, rotated and bolted back in place with a fresh end in the jamb

New Machined End



Unbolt All 4 Bolts, Rotate So New Machined
End is in Place, Bolt Back In Place



Forcing Outward Swinging Door



Seat Insert In Place ,Pull Pin Back,
Close door, Release Pin



Forcing Outward Swinging Door



- Pin and Insert in Place

Outward Swinging Door



Outward Swinging Door



Outward Swinging Door



Cutting Commercial Door Hinge



Cutting Commercial Door Hinge

- Hinge Cut Station

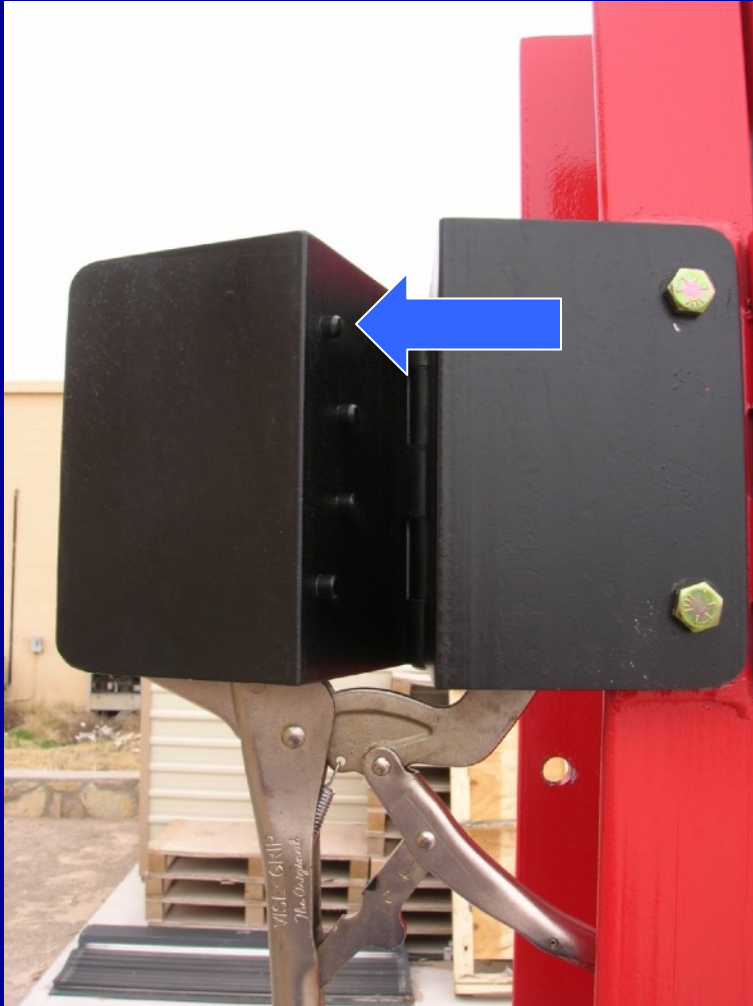


Cutting Commercial Door Hinge

- Release Pliers



Cutting Commercial Door Hinge



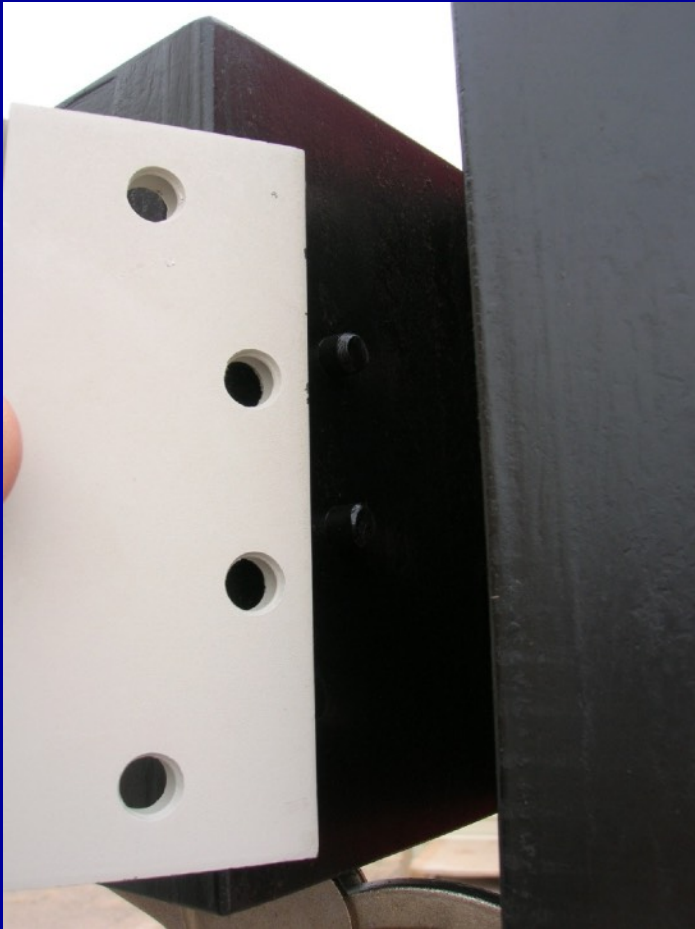
- Open to expose Hinge mounting Pins

Cutting Commercial Door Hinge



- Hinge Mounting Pin

Cutting Commercial Door Hinge



- Place Hinge so hinge mounting holes align with Cut Station mounting pins

Cutting Commercial Door Hinge



- Hinge aligned with mounting pins ready to close. Use caution when closing to avoid pinching hand

Cutting Commercial Door Hinge



- Close and secure pliers tightly.

Cutting Commercial Door Hinge

- Caution against Blade Breakage
- Exercise saw control

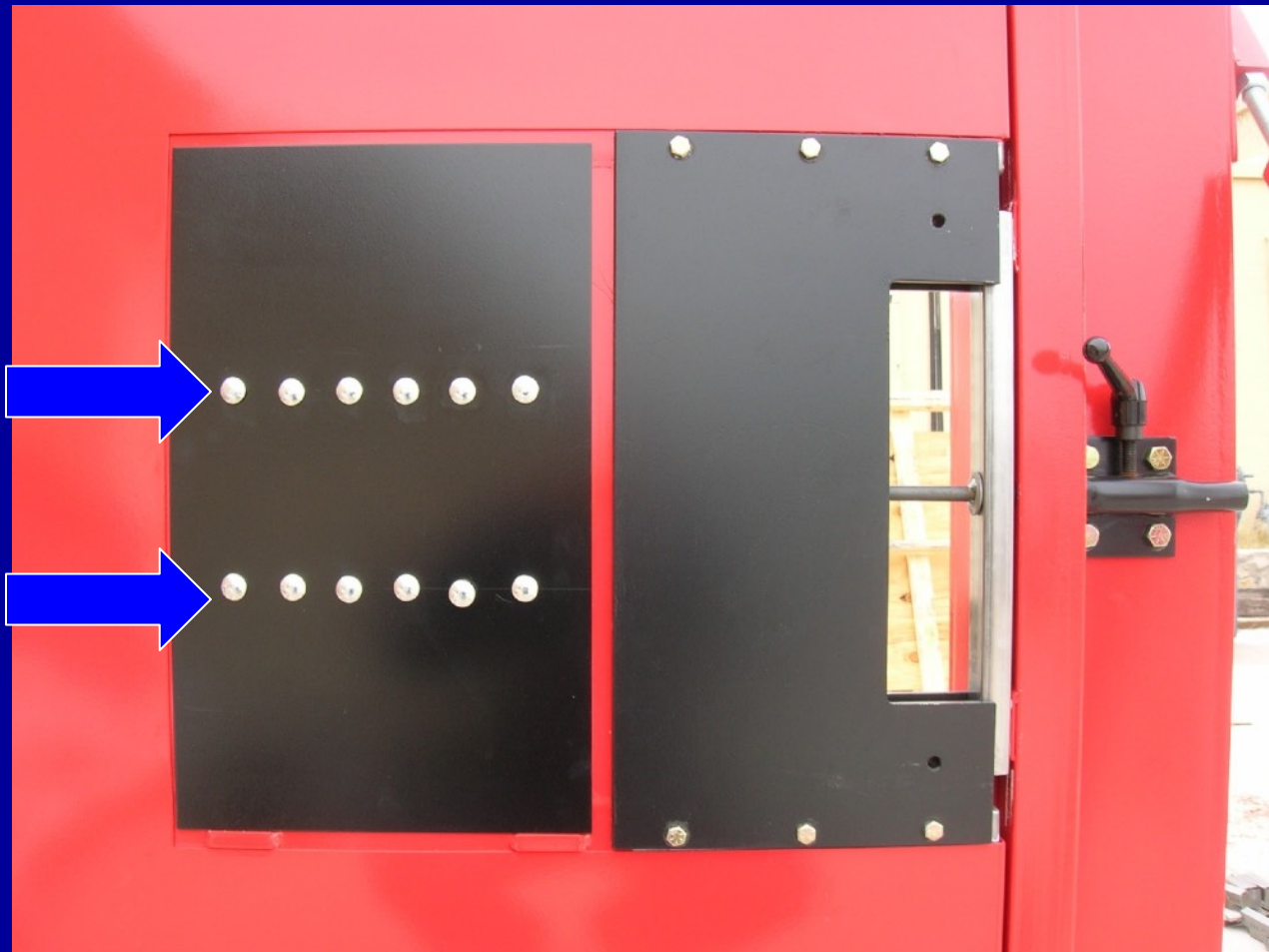
Cutting Commercial Door Hinge



Cutting Commercial Door Hinge



Cutting Security Drop Bar Bolt



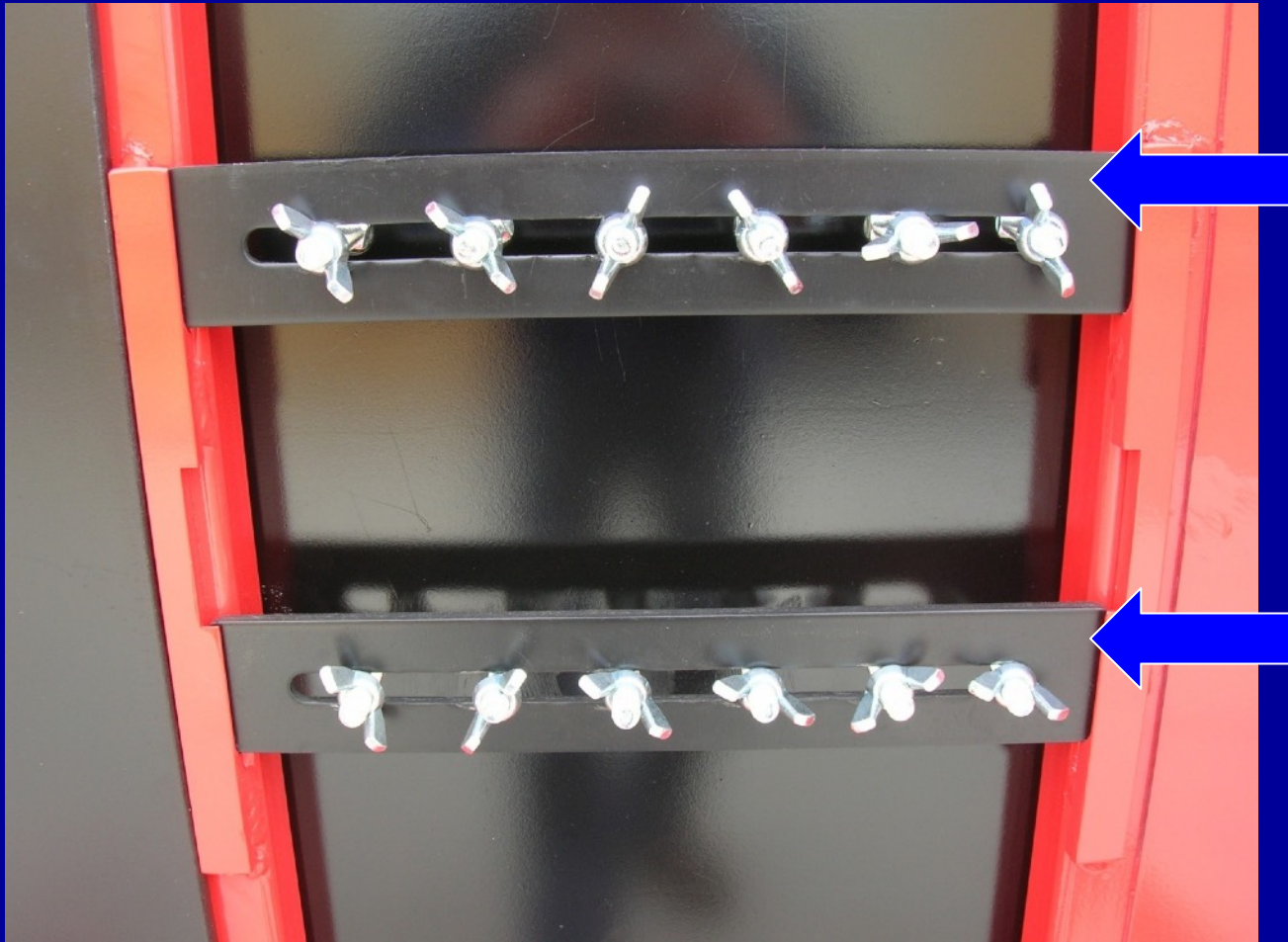
Security Drop Bar Plate



Carriage Bolts



Securing Bracket for Bolts



Securing Bracket for Bolts

- Place Security Drop Bar Plate on Door
- Push Carriage bolt thru Plate and slot of rear bracket
- Secure with nut

Cutting Security Drop Bar Bolt

- Caution against Blade Breakage
- Exercise saw control

Cutting Security Drop Bar Bolt



Cutting Door Latch



Latch Cut Protective Plate



Latch Cut Rod



Rod Securing Tube and Handle



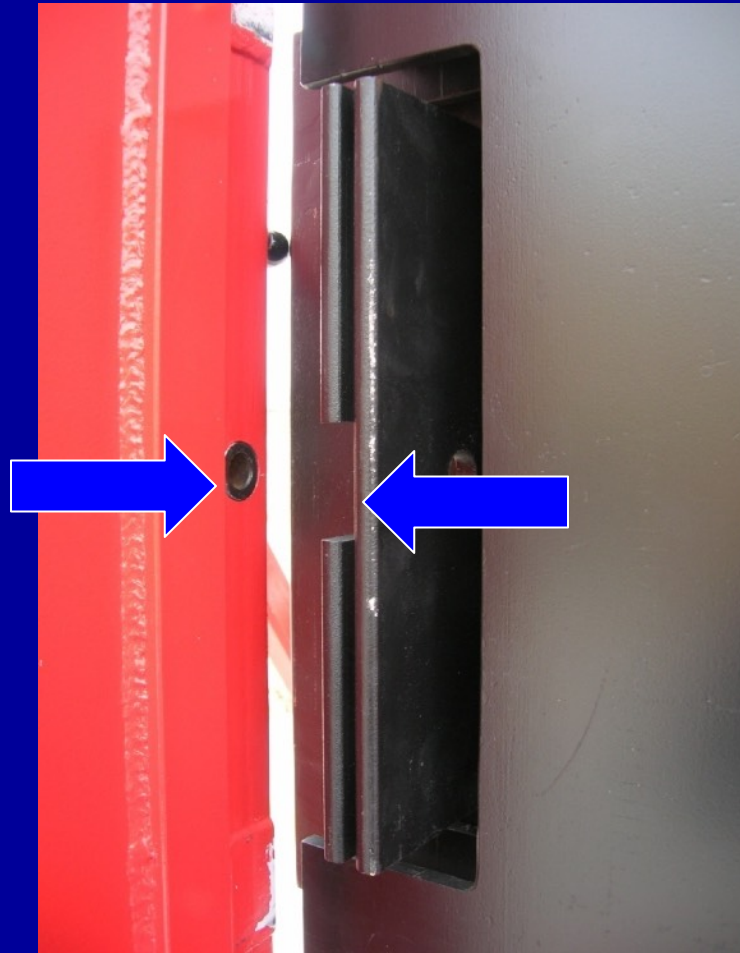
Remove Pin and Insert



Mount Protective Plate to Door



Mount Plate with Cutout Toward Hole In Door Jamb

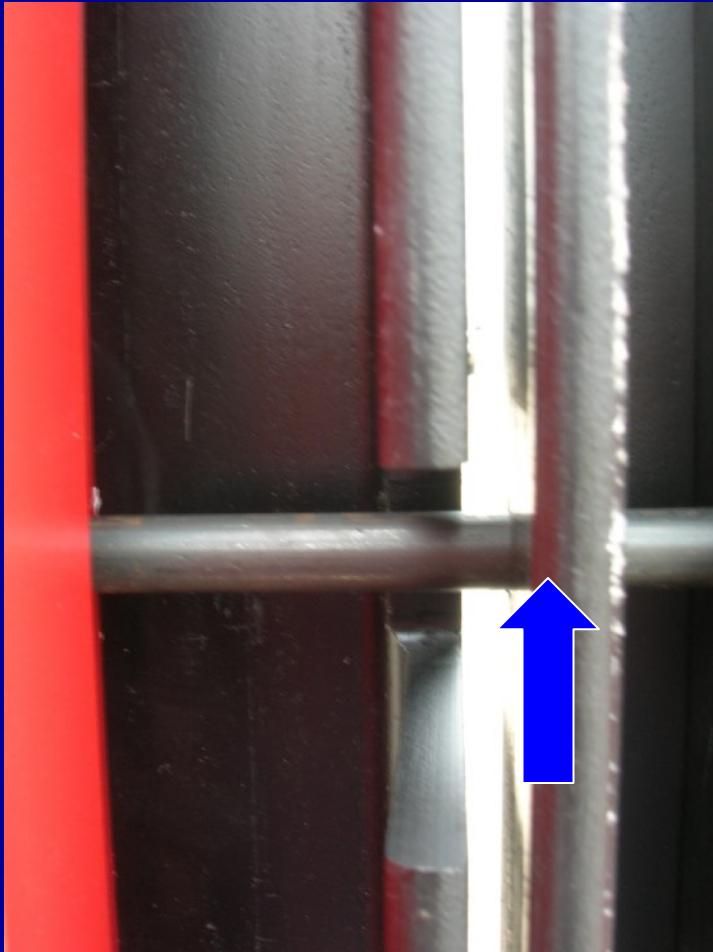


Protective Plate in place secured by mounting bolts



Insert Cutting Rod thru Tube





- Push Rod thru Tube until rod passes thru proactive plate, securing door.

Rod inserted into Protective Plate





- Caution against Blade Breakage
- Exercise saw control

Ready to Cut



Cutting Door Latch



Cutting/Breaking Padlock



Cutting/Breaking Padlock



Cutting/Breaking Padlock



Adjustment

- Door should be set up on a firm level surface
- Door movement can be minimized by putting against curb or solid object

Adjustment



If needed nuts can be adjusted to adjust door

Must be off casters to force. Casters to move only



Must be off casters to force. Casters to move only

